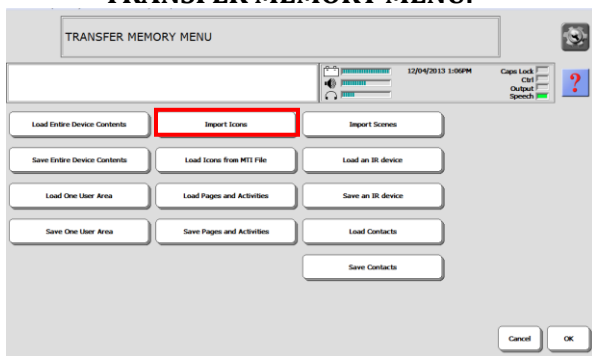




IMPORTING AN ICON TO THE ACCENT1200-10

You must have graphics/icons stored on the hard-drive of the Accent, on a USB stick, or SD card in order to import them to your device. Your device will import most of the graphics files that Windows® will support.

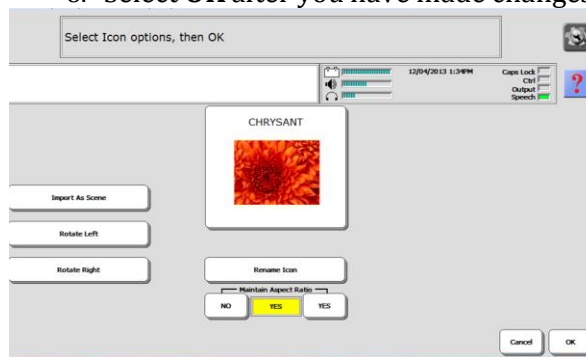
1. Plug your USB drive or SD card into your device (skip this if your image is stored on the hard-drive of the Accent).
2. Go to the Toolbox and open the **TRANSFER MEMORY MENU**.



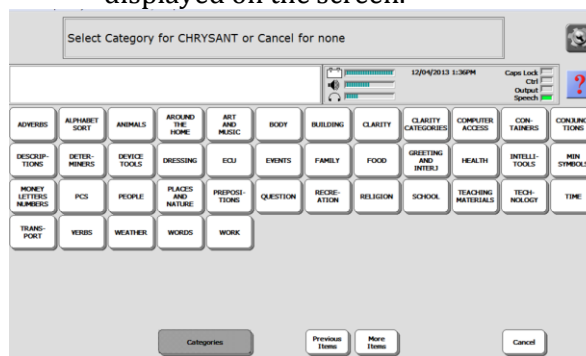
3. Select **Import Icons**.
4. Navigate to the drive and/or folder containing your graphics/icons.
5. A list of all the graphics/icons stored on your USB stick or SD card will be displayed. Select the ones that you wish to import, or use **Select All**.
6. Select **OK**.

7. The imported graphic/icon will be displayed and an option to change the name. You may also change the **Aspect Ratio**. We suggest you leave this set to **YES**.

8. Select **OK** after you have made changes.



9. The Icon Category Page(s) will be displayed on the screen.



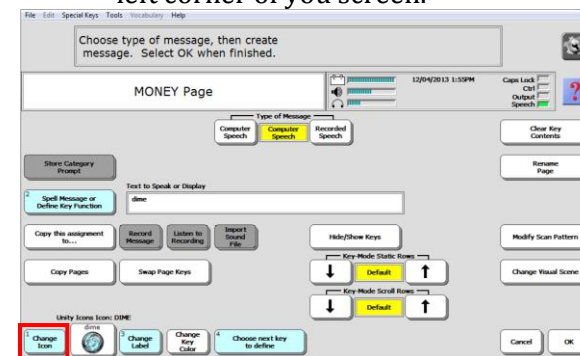
*Your device automatically places the graphic in an **IMPORTS** category folder. If you want the graphic available in another Category, select the Category. If you just want to keep the graphic in the **IMPORTS** folder, select **Cancel** to exit the Category Page.*

9. Select **OK** to exit the **TRANSFER MEMORY MENU** or **Cancel** to exit.

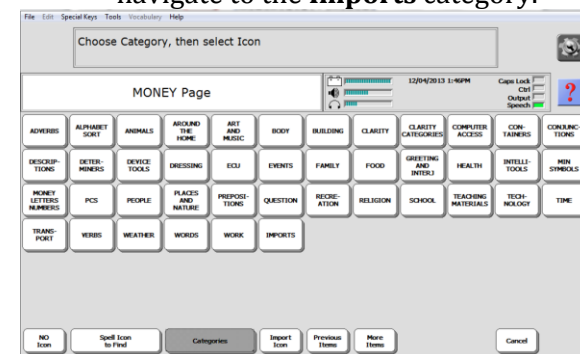
DELETING IMPORTED ICONS FROM YOUR ACCENT:

You can simply delete imported icons from your device in any programming screen that has the option to **Change Icon**. The example below is through Modify Page:

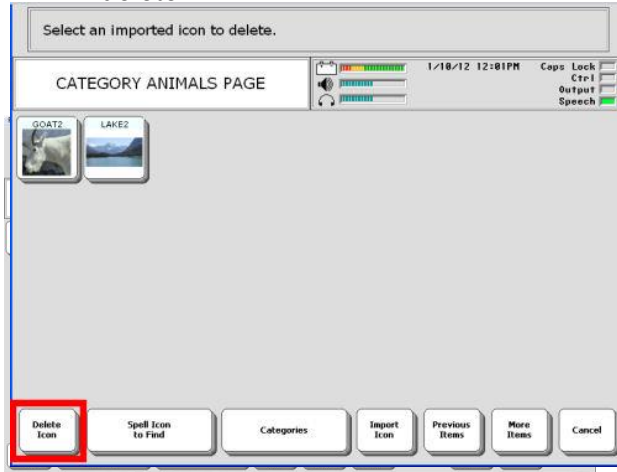
1. In your **Toolbox**, select **Modify Page** and select any page. It doesn't matter what page you select since you will not be saving the changes to the page, only deleting your imported icons.
2. Select any key on this page. Again, it doesn't matter what key you select.
3. Choose the **Change Icon** key in the lower left corner of your screen.



4. Select **More Items** in the lower right then navigate to the **Imports** category.



5. All previously imported icons will now be displayed. Select the **Delete Icon** key in the lower right corner of the display.
6. Choose the **Imported Icon** you wish to delete.



7. A yellow box will appear asking if you want to Delete this Icon. If you wish to Delete this Icon select Yes. If you have changed your mind, select No.
8. To delete more icons, repeat steps 5 to 9.
9. When finished select Cancel twice to exit.

Liberator contacts

Regional Consultants

Mark Street: 07747016660

Eleri Davies: 07827324286

Jacqui Malthouse 07825512669

Office

Technical Support: 01733 370470
(Option 2)