




Accent 1200-10 USING THE WORD PREDICTION MENU

Set-Up Key

Used for making quick modifications to a key. This can

be found by pressing the tools key  then selecting the Set-Up key.

Emulation Software (PASS)

This can be downloaded from the **Liberator** website and allows you to program your device on a **PC**; it is a virtual device on your **PC**.

F9 is the Toolbox and F12 is the Modify Button on the Emulation Software

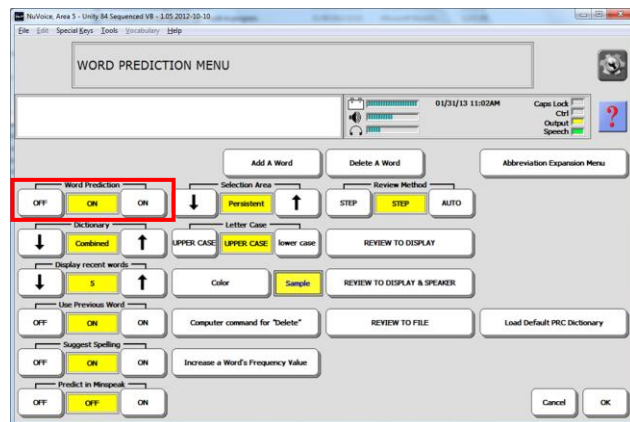
TURNING WORD PREDICTION ON

There are two different options for Word Prediction in Accent 1000.

Press the tools key  then select Word Prediction Menu.

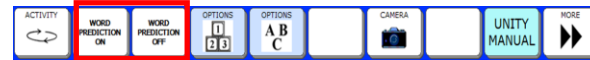
Word Prediction: On/Off

This must be **ON** in order to use Word Prediction. The default for word prediction is **OFF**.



Accent 1200-10 version 1.08 & Above

You can also turn Word Prediction On from the Activity row. Select the **DEVICE** Activity in the Activity row.



USING THE WORD PREDICTION ON

1. Go to your Spelling Page and begin to spell a word. Watch the display as you spell.
2. Words appear in the rectangle beneath the Text Display Area. This area is the Word Prediction window. Words that appear here are words your device is predicting that you might want from the letters you have spelled.
3. Press on the word, to select a word from the Word Prediction window. If you are scanning, activate your switch when the word you want is highlighted.



NOTE: When you select a word: the word you selected goes in the Text Display Area and the Word Prediction window disappears, or you will see a list of words that are derived from the word you selected. You can select one of these words or you can continue to spell and watch more words come up in the Prediction window.

****If scanning, you may need to switch to a Scanning Spell Page or select the **SCAN WORD PREDICTION** key if that is available on your spelling page.****

WORD PREDICTION DICTIONARY

The words that are being displayed in the window are from the Word Prediction dictionary you selected: **PRC**, **WordQ** or a **Combination** of the two.

PRC DICTIONARY

If you select **PRC Dictionary**, the only display option you can set is **Display Recent Words**.

- The Word Prediction system will keep track of and predict all the words that apply that you have used most recently. Once the most recently used words are displayed, the words that you see will be in the order of most frequently used.
- In the **Display Recent Words** option, select the number of recently used words that you would like to see on the display. When you begin to spell a word, your device will display the 5 (or whatever number you have selected) most **recently used** words that begin with the letter(s) you have typed. The rest of the words on the display will be the most **frequently used** words that begin with the letter(s) you have typed.
- If you set the number to "0", the words that appear in the Word Prediction Window will be the words that you use most frequently, but not necessarily the most recently used words.

WORDQ™ DICTIONARY

If you select **WordQ Dictionary**, you can set two display options: **Use Previous Words** and **Suggest Spelling**. Both of these options default to **ON**.

Use Previous Words means that once you have selected a predicted word, WordQ will then display the words that are most likely to follow it. This may save you from having to start typing another word.

- If you turn this OFF, once you have selected a predicted word, WordQ will not predict another word until you begin to type in what you want.
- **Suggest Spelling** tells WordQ to try to predict the word you want if you have misspelled it.



OTHER WORD PREDICTION MENU ITEMS

- **Display Recent Words** does not work if you have selected the WordQ dictionary alone.
- **Combined Dictionaries** - both dictionaries will work together to predict words. All three display options can be set: **Recent Words**, **Previous Word** and **Spelling**. Words you used most recently will be predicted first and then the words most likely to follow the word you typed or selected.
- **Predict in Minspeak** - When On, along with **Spell One Word and Icon Tutor On-The-Fly** (in the FEEDBACK MENU), you can type on your Spelling keyboard select the word in the Word Prediction Area, return to your Unity overlay and the predicted word with its endings will be visible in the Word Prediction Area.
- **Selection Area** - predicted words are visible in the area below the regular Text Display Area. You select a word by pressing on it
 - **Large Selection Area** - this allows you to select a word by pressing on it in the Word Prediction Area or by pressing on the space above the word in the Text Display Area. The default is **off**.
 - **Fixed** indicates that your device is placing your word choices on a fixed grid. You can select anywhere on the word to activate it. **Persistent** keeps grid location defined at all times, even when Word Prediction is Off. "Persistent" is the default.
- **Letter Case** – gives the option of viewing predicted words in **UPPER** or **lower case**.
- **Color** - the words in the Word Prediction window can be highlighted in any colour and so can the background. Use this to alter the predicted

Accent 1200-10 version 1.08 & Above

- **Increase a Word's Frequency Value** – allows you to 'force' Word prediction to move a word you frequently use to the front of the predicted words line
- **Review to Display** – allows you to review words within the dictionary. When you select this option your device tells you to enter the start letters of the words you want to review. If you want to review all the words that begin with a certain letter(s), just type that letter and activate OK. If you want to see more specific words, type in more letters. For example, if you type in "chu" you will see all the words that begin with "chu". If you want to look at the entire dictionary, do not type in anything. Just activate **OK**.
- **Review to Display and Speaker** - this works the same way as Review to Display except that your device will speak the entries on each page.
- **Review to File** - this allows you to save the dictionary review in a file on a USB drive or on the Accent 1000's hard drive. *Remember to set the correct options in the **OUTPUT MENU**.*
- **Load PRC Default Dictionary** – your device is received with the default **PRC Dictionary** already loaded into it. You can add words to, and delete words from, this dictionary. If you make many changes to the dictionary and then decide you want the original PRC dictionary loaded back into your device, you can use the **Load Default PRC Dictionary** option – you will lose all of the changes you made.

NOTE: If you want to **save your current PRC dictionary**, perform an MTI and select the **Save Entire Device** option. **At this time you cannot make changes to the WordQ dictionary. **

COMPUTER COMMAND FOR "DELETE"

- You will only use this option if you are using a computer emulation program that has a command for **delete** that is **different from your device's default command**. The default "delete" command is: **←backspace**.
- If the **delete** command for your computer is different you must activate the **Computer**

Command for Delete option and type in the keyboard emulation command that your program uses. Activate **OK**.

- When **Word Prediction** is On and **Output** is set to **Immediate** in the **OUTPUT MENU**, any characters you type are sent to the display and to the computer monitor. When you select a word from the Word Prediction window, the characters that you spelled are deleted from your device display and are replaced by the word that you want. These spelled characters must also be deleted from your computer display. Your device sends the **Delete** command for each character that is to be erased from your computer, so it is important that it knows the correct command.

** The computer **delete** command must be used to delete one character at a time. **Delete Word** will not work correctly. **

ABBREVIATION EXPANSION MENU

When switched **ON**, this option allows you add in abbreviations for words and phrases. When the abbreviations are used when typing, the device will automatically expand to the actual word or phrase.

1. Select the **Add an Abbreviation**.
2. The Spelling keyboard will be displayed and the device will ask you to 'Enter the letters for your abbreviation.' For e.g. 1dk
3. Type abbreviation and select **OK**.
4. Your display asks you to "enter the text to substitute"
5. Enter the word or words for your expanded abbreviation. In this example, we want "idk" to stand for "I don't know." Then select **OK**.
6. Now when you enter "idk" your device will display and speak, "I don't know."

Liberator contacts

Regional Consultants

Mark Street: 07747016660

Eleri Davies: 07827324286

Jacqui Malthouse: 07825512669

Office

Technical Support: 01733 370470
(Option 2)