



CONNECTING THE ACCENT 800 TO AN EXTERNAL COMPUTER QUICK REFERENCE GUIDE

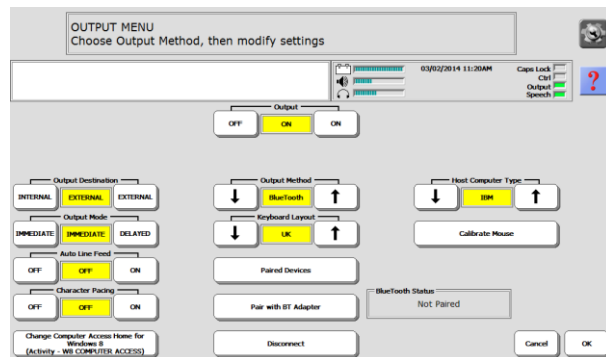
The Accent 800 is connected to an External Computer via **PRC's Bluetooth Adapter**



CONNECTING THE ACCENT 800 TO A COMPUTER VIA BLUETOOTH TO THE PC

The Bluetooth adaptor has a wide range. Your communication aid and the adaptor do not have to "see" each other like infrared devices do. You can be across the room from the computer in any direction and the connection will still be made.

Important: Before you plug the adapter into your computer; Notice that the wireless adapter has a **PRC** Label on one side and a label with the **Icon** of a small switch on the other. The switch label covers a small button which is called the "**Pair Button**". Remember you will have to press this during the set-up process, so depending on where the USB ports are, you will have to access the pair button on the adapter.

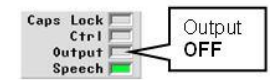
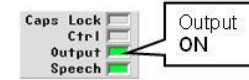


Accent 800 Version 1.08 & Above

1. Insert your **Bluetooth Adapter** into the **USB** port on the PC. The **LED** on the adapter may flash for a moment when you plug it in.
2. Select the **Tools/HOME Key** then **Toolbox**.
3. Select **Output Menu**.
4. Set Output to **ON**.
5. Set Output Destination to **External**.
6. Set Output Method to **Bluetooth**.
7. Set Output Mode to **Immediate**.
8. Leave Character Pacing **Off**.
9. Set the Keyboard Layout to **UK**.
10. Set Host Computer Type to either **IBM** or **MAC**. (Depending on what you are using).
11. Select the **Pair with BT Adapter** button.
12. A yellow box will appear on the screen advising to, "**Press the pair button on the adapter.**" Press the **circular switch icon** on the adapter.
13. The **LED** on the adapter will flash blue. When the light changes to a solid blue, this indicates the adapter has paired with the device. **** It can take up to 20-30 seconds to pair.****
14. Once paired, the Bluetooth Status box (in the right hand corner of the Menu) will state, "**Paired & Connected**".
15. Select **OK** to exit the Menu.
16. Select **Go To Home/Core**.
17. On your **PC/MAC**, open a word document or an application you can type into.
18. Now start typing using your overlay. You should be able to see the information appear on your computer screen.

****Important Note:** Once your adapter has been paired with your computer, it will always pair even if you remove it from your **PC** & then reconnect it at a later time. The **LED** should turn blue and it should be ready to go as long as you have your settings set correctly in the **Output Menu**.**

To check at any time whether **Output** is **ON** or **OFF**, look at the status **Display Area** on your device.



Liberator contacts

Regional Consultants

Mark Street: 07747016660

Eleri Davies: 07827324286

Jacqui Malthouse: 07825512669

Office

Technical Support: 01733 370470
(Option 2)