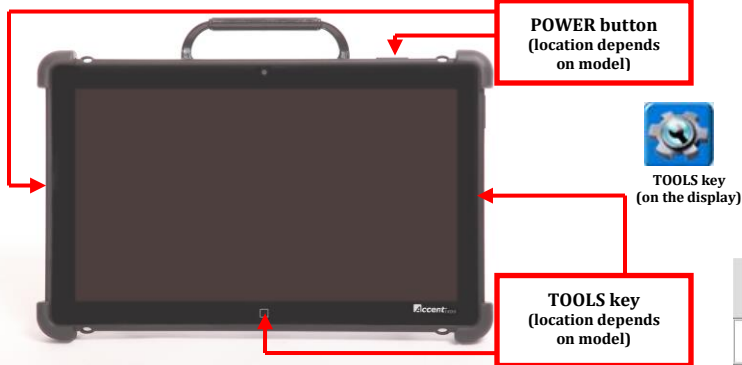



Accent (1400/1000/800) Using and programming IR v2.00 and above



Set-Up Key

Used for making quick modifications to a key. This can be found by pressing the TOOLS key  then selecting the Set-Up key.

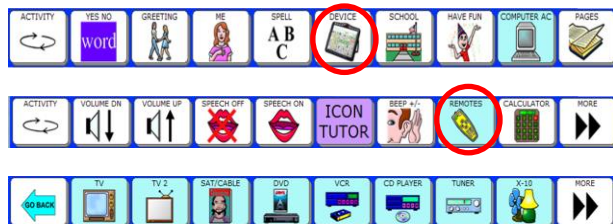
Emulation Software (PASS)

This can be downloaded from the **Liberator** website and allows you to program your device on a PC; it is a virtual device on your PC.

F9(x2) is the Toolbox and F12 is the Modify Button on the Emulation Software

USING YOUR COMMUNICATION AID AS A REMOTE CONTROL

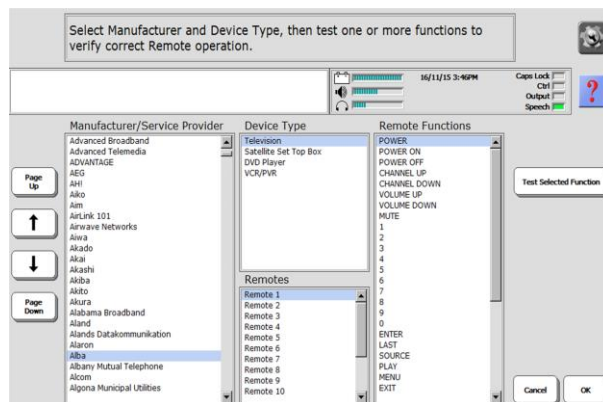
With its built-in infrared (IR), your device can learn IR signals for any device you own that has a remote control. Your device has a **Remotes Activity**, which links to pages containing pre-stored commands and icons for the basic functions for various remote control devices such as **X-10 Device, TV, DVD & CD Player**, etc.



USING THE PRE-PROGRAMMED REMOTE CONTROL DEVICE PAGES

The remote control commands for a large number of popular brands and Service Providers such as Samsung, AEG, Apple, Finlux, Freesat, Huawei, Sky, etc. have already been stored onto pages within the Accent. This saves you having to teach your Accent device any IR commands.

1. Go to the **Toolbox** and open the **IR Setup Menu**.
2. Select Add a Preprogrammed Device
3. Spell a NAME for the device, for E.g. Lounge TV
4. Partially spell the name of the device
Manufacturer the select OK or select OK to see all Manufacturers. If you did the former, your screen should look like this:



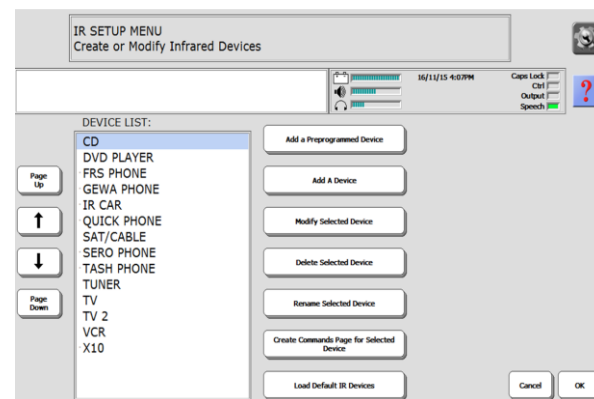
5. Select the device **Manufacturer/Service Provider, Device Type** and **Remote** (for instance if you have 3 Alba TVs each could have an associated REMOTES page).
6. You may **Test a Selected Function** if you wish.
7. Select **OK**. And select **YES** to create a Commands Page for the IR device.
8. Select the TYPE of device, for e.g. 3D TV, etc.
9. Select **OK**.
10. Select a GRID size for your page that is the same as your default Vocabulary Grid size, the select **OK**.
11. Select **YES** to modify the new IR commands Page or no if you don't wish to.
12. Select **OK** to exit.
13. You may now link your page where you wish. All PRE-Programmed pages are pre-fixed by IR-, so for eg your Lounge TV page will be displayed in the Page menu as, **IR-Lounge TV**.
(Please refer to the general Quick Reference Guide if you wish to know how to link pages.)

TEACH REMOTE CONTROL SIGNALS FOR THE DEVICES THAT ARE IN YOUR REMOTES ACTIVITY

Before you begin to **Store** any signals, ensure the **Remote Control** you are going to use is at hand. There is an insertable tool called **IR Remote** that functions like a **Universal Remote**. This tool may be stored under an **Icon Sequence** or added to the **Remotes Activity** – it allows access to all of your **Remote Control Appliance Signals** from one page. IR commands/signals are stored via the **IR Setup Menu** - this automatically stores them onto the correct **Remotes Activity** page for later use.

1. Go to the **Toolbox** and open the **IR Setup Menu**.
2. Activate the arrow keys in the **Device List** to select the device/appliance whose signals you want to teach, e.g., **TV**.
3. With the name of the device in the **Device List**, activate the **Modify Selected Device** button.
4. Press the arrow keys for '**Function**' to select the function that you want your device to learn, e.g., "**Power**".

Your screen should look like this:



5. Get your **Remote Control**, ensure you know which button you wish to use on the remote. Point the remote 6-8" away from your device's **IR** window. - located on the top of the amplifier module at the back of the device.

To teach a remote control signal to your device, point your remote control at the IR area. To send an IR signal from your device, ensure the IR window is facing in the general direction of the appliance you want the signal sent to. The handle will not interfere with IR signals.



6. On the device, activate the **Re-Learn Selected Signal Key**.
7. On the remote control, press the function (key that you want the device to learn), e.g., **"Power"** key. A beep will be heard when the device accepts the signal.
8. The signal may be tested using your device. Point your device's **IR** window towards the appliance being tested (e.g., the **TV**) and activate the **Test Signal** key in the menu.
9. Repeat **steps 4-8** for each function you want your device to learn.

ADDING A NEW DEVICE TO THE IR SETUP MENU

1. Go to the **Tool Box** and select **IR Setup Menu**. Select **Add A Device**.
2. Type the device name for example **BEDROOM TV** then select **OK**.
3. Type in the name of the function to be added, for e.g. **POWER ON** then select **OK**.
4. You will now be asked to **TEACH THE SIGNAL**, do this by pointing the remote 6-8" away from your device's **IR** window.
5. The signal may be tested using your device. Point your device's **IR** window towards the appliance being tested and activate the **Test Signal** key in the menu.
6. Press **Add A Function** to add in new functions by repeating **steps 4-6** above.

CREATE A NEW REMOTE PAGE


*This assumes you want to store the **TV Remote** functions on a **BEDROOM TV** page and that you want the page to be part of your **REMOTES** activity. You also want to be able to go to any other remote page from your **BEDROOM TV** page.*

1. Go to the **Toolbox** and press **CREATE PAGE**.

2. Type the name of your remote page i.e. **BEDROOM TV** and select **OK**.
3. Select **Create Page from Template**.
4. Select a blank key to program your first function.
5. Select **Spell Message or Define Key Function**.
6. Select the **Insert Tool Button**.
7. Scroll through the tools by selecting **More Items** and select the **TOOL** called: **IR**
The screen should now display a list of your **IR Devices**.
8. Select the **BEDROOM TV** device.
9. Select the function you wish to store, in this instance the **POWER** function. The programming displayed should read **<IR(BEDROOM TV,POWER)>**
10. Select **OK**.
8. The **Power Button** for the **BEDROOM TV Remote Page** is now available for use.
9. You may change the **Icon & Label** if needed
10. Repeat **steps 5-11** to add the rest of your functions for your **BEDROOM TV Page**.
11. Select **OK** to exit.

LINKING A REMOTE CONTROL PAGE TO THE REMOTE ACTIVITY

*This assumes you have already created the page you wish to link, for e.g. the **BEDROOM TV** page.*

1. From your **Core**, select **TOOLS** in the **Activity Row**, then select **REMOTES**.
2. Press the tools key  then select the **SETUP KEY** from the on-screen user keys (Press F12 in **PASS**)
3. Select a blank key within that **Activity Row**.
4. Select **Spell Message or Define Key Function**.
5. Select the **Page Link** button.
6. Select **OPEN** to the question, **"Do you want the page to stay open or close after you select a key?"** (This will allow you to stay on your **TV2 Page** until you wish to exit).
7. Select the page you wish to link, in this instance, select the **BEDROOM TV** Page.
8. The programming displayed should be: **<Set-Page(BEDROOM TV)>**
9. Select **OK**.
10. You may change the **Icon & Label** if needed
11. Select **OK** to exit.

HOW DO I ADD ONTO MY REMOTE PAGE, A SIGNAL WITH MULTIPLE COMMANDS (FOR EG A 3-DIGIT TV CHANNEL)

*To program a TV Channel with more than 1 digit, for e.g. 256, you need to create a macro for one key that contains 2, 5, & 6. **Your Device must already know the Signals** for the individual functions, 2 & 5 & 6. If you haven't taught the signals to your device yet, do so before going ahead with the exercise below.*

1. Go to **TOOLBOX** and select **MODIFY PAGE**
2. Scroll through using **More items** until you find the **BEDROOM TV** page
3. Select a **Blank key** on that page to program your channel **256**
4. Select **Spell Message or Define Key Function**.
5. Select **Insert Tool** and then **More Items** until you see the Tool **IR** on your screen.
6. Select **BEDROOM TV** as your **Device**.
7. Select the **Channel 2 Button** from the list of functions.
8. Repeat **Steps 5, 6, & 7**, until you build the channel **2 5 6** as shown below:
<IR(BEDROOMTV,2)><IR(BEDROOMTV,5)><IR(BEDROOM TV,6)>.
9. You have now created your Macro for Channel **256**. If you want to change the **Icon** and **Label** you can do so.
10. To program similar channels/functions repeat steps **1-9** or select **OK** to exit.
11. When you have successfully stored the signals for a device, a small dot will appear beside the name of that device on the main screen of the IR SET-UP MENU. A dot will also appear beside the functions that have signals stored for them. You will see those when you are using the function screen of the IR SETUP MENU.

Liberator contacts

Technical Support:

01733 370470 (Option 2)
info@liberator.co.uk

Address:

Liberator Ltd
Whitegates
High Street
Swinstead
NG33 4PA