



Eco2 IR Commands Quick Reference Guide ver 3.00 UK

Set-Up Key

The set-up key is the #2 key on the outer case of the device and is used for making quick modifications to a key.

Emulation Software (PASS)

This can be downloaded from the Liberator website and allows you to program your device on a PC; it is a virtual device on your PC.

F9 is the Toolbox and F7 is the Modify Button on the Emulation Software

USING YOUR COMMUNICATION AID AS A REMOTE CONTROL

With its built-in infrared (IR), your device can learn infrared signals for any device you own that has a remote control. Your device has a **Remotes Activity**, which links to pages containing pre-stored commands and icons for the basic functions for a number of remote control devices such as X-10 Device, TV, VCR & CD Player, etc.



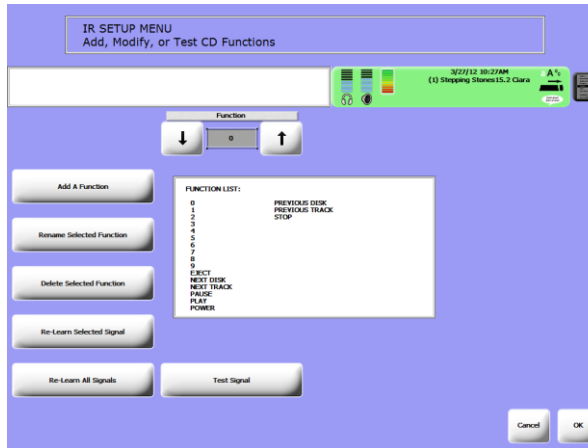
There is an insertable tool called **IR Remote** that functions like a Universal Remote. This tool may be stored under an **Icon Sequence** or added to the **Remotes Activity** – it allows access to all of your **Remote Control Appliance Signals** from one page.

TEACH REMOTE CONTROL SIGNALS FOR THE DEVICES THAT ARE IN YOUR REMOTES ACTIVITY IN THE ECO2

*Before you begin to **Store** any signals, ensure the **Remote Control** you are going to use is at hand. IR commands/signals are stored via the **IR Setup Menu** - this automatically stores them onto the correct **Remotes Activity** page for later use.*

1. Go to the **Toolbox** and open the **IR Setup Menu**.
2. Activate the arrow keys in the **Device Box** to select the device/appliance whose signals you want to teach, e.g., **TV**.
3. With the name of the device in the **Device Box**, activate the **Modify Selected Device** button.
4. Press the arrow keys for '**Function**' to select the function that you want your device to learn, e.g., "**Power**".

Your screen should look like this:



5. Get your Remote Control, ensure you know which button you wish to use on the remote. Point the remote 6-8" away from your device's **IR** window - see image below:



6. On the device, activate the **Re-Learn Selected Signal** Key.
7. On the remote control, press the function (key that you want the device to learn), e.g., "**Power**" key. A beep will be heard when the device accepts the signal.
8. The signal may be tested using your device. Point your device's **IR** window towards the appliance being tested (e.g., the **TV**) and activate the **Test Signal** key in the menu.
9. Repeat **steps 4-8** for each function you want your device to learn.

ADDING A NEW DEVICE TO THE IR SETUP MENU

1. Go to the **Tool Box** and select **IR Setup Menu**. Select **Add A Device**.
2. Type the device name for example **BEDROOM TV** then select **OK**.
3. Type in the name of the function to be added, for e.g **POWER ON** then select **OK**.
4. You will now be asked to **TEACH THE SIGNAL**, do this by pointing the remote 6-8" away from your device's IR window.
5. The signal may be tested using your device. Point your device's **IR** window towards the appliance being tested and activate the **Test Signal** key in the menu.
6. Press **Add A Function** to add in new functions by repeating **steps 4-6** above.



Liberator

A Prentke Romich Company
Communication without limitations

CREATE A NEW REMOTE PAGE

This assumes you want to store the **TV Remote** functions on a **BEDROOM TV** page and that you want the page to be part of your **REMOTES** activity. You also want to be able to go to any other remote page from your **BEDROOM TV** page.

1. Go to the **Toolbox** and press **CREATE PAGE**.
2. Type the name of your remote page i.e **BEDROOM TV** and select **OK**.
3. Select **Create Page from Template**.
4. Select a blank key to program your first function.
5. Select **Spell Message or Define Key Function**.
6. Select the **Insert Tool Button**.
7. Scroll thru the tools by selecting **More Items** and select the **TOOL** called: **IR**
 - a. The screen should now display a list of your **IR Devices**.
8. Select the **BEDROOM TV** device.
9. Select the function you wish to store, in this instance, the **POWER** function. the programming displayed should read **<IR(BEDROOM TV,POWER)>**
10. Select **OK**.
8. The **Power Button** for the **BEDROOM TV Remote Page** is now available for use.
9. You may change the **Icon & Label** if needed
10. Repeat **steps 5-11** to add the rest of your functions for your **BEDROOM TV Page**.
11. Select **OK** to exit.

LINKING A REMOTE CONTROL PAGE TO THE REMOTE ACTIVITY

This assumes you have already created the page you wish to link, for e.g the **BEDROOM TV** page.

1. From your **Core**, select **ECO2 TOOLS** in the **Activity Row**, then select **REMOTES**.
2. Select the **SETUP KEY** (#2 or F7 in **PASS**)
3. Select a blank key within that **Activity Row**.
4. Select **Spell Message or Define Key Function**.
5. Select the **Page Link** button.
6. Select **NO** to the question, "**Do you want the linked page to close after you select a key?**" (This will allow you to stay on your **TV2 Page** until you wish to exit).
7. Select the page you wish to link, in this instance, select the **BEDROOM TV** Page.
8. The programming displayed should be: **<Set-Page(BEDROOM TV)>**
9. Select **OK**.
10. You may change the **Icon & Label** if needed
11. Select **OK** to exit.

HOW DO I ADD ONTO MY REMOTE PAGE, A SIGNAL WITH MULTIPLE COMMANDS (FOR EG A 3-DIGIT TV CHANNEL)

To program a TV Channel with more than 1 digit, for e.g 256, you need to create a macro for one key that contains 2,5, & 6. **Your Device must already know the Signals** for the individual functions, 2 & 5 & 6. If you haven't taught the signals to your device yet, do so before going ahead with the exercise below.

1. Go to **TOOLBOX** and select **MODIFY PAGE**.
2. Scroll through using **More items** until you find the **BEDROOM TV** page and select.
3. Select a **Blank key** on that page to program your channel **256**.
4. Select spell **Spell Message or Define Key Function**.
5. Select **Insert Tool** and then **More Items** until you see the Tool **IR** on your screen.

6. Select **BEDROOM TV** as your **Device**.
7. Select the **Channel 2 Button** from the list of functions.
8. Repeat **Steps 5, 6, & 7**, until you build the channel **2 5 6** as shown below:
 - a. **<IR(BEDROOMTV,2)<IR(BEDROOMTV,5)> <IR(BEDROOM TV,6)>**.
9. You have now created your Macro for Channel **256**. If you want to change the **Icon** and **Label** you can do so.
10. To program similar channels/functions repeat steps **1-9** or select **OK** to exit.

Liberator contacts

Regional Consultants

Mark Street: 07747016660

Verity- Jane Hart: 07879818788

Eleri Davies: 07827324286

Jacqui Malthouse: 07825512669

Paul Whitehouse: 07879418897

Office

Technical Support: 01733 370 470
(Option 2)