



## ECO2 USING THE CAMERA IN 2.07 SOFTWARE

### Set-Up Key

The set-up key is the #2 key on the outer case of the device and is used for making quick modifications to a key.

### Emulation Software (PASS)

This can be downloaded from the Liberator website and allows you to program your device on a PC; it is a virtual device on your PC.

### F9 is the Toolbox and F7 is the Modify Button on the Emulation Software

### USING THE IN-BUILT CAMERA

ECO2s running Software Version 2.07 and below have a built-in camera. The lens is on the top back of the case. The camera is a fairly simple one and can be used to take pictures of things you might like to use for personalized icons or visual scenes.

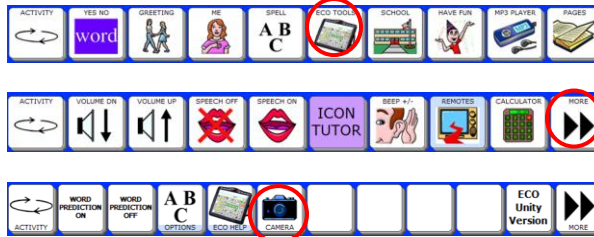


**NOTE:** Your Camera feature must be turned **ON** in the **Maintenance Menu** before the Camera feature will work. To Turn **ON** the Camera, go to the **Toolbox**, select **Maintenance Menu**, and then **Built-in Devices**. Here you see the **Camera** feature - select **ON** so the yellow box reads **ON**. Select **OK** three times to exit the menus and toolbox.

- For best results your **ECO** should be upright on its stand, mounted on a table stand or mounted on a wheelchair. If the **ECO** is lying flat the camera lens will not be able to "see" much.
- You cannot take pictures, download them to a computer and print them out as you can with a full-blown digital camera.
- The camera will zoom in and allow you to pan in any direction.
- You can also hold a real photograph 6-8 inches away from the lens and take a picture of the photo.

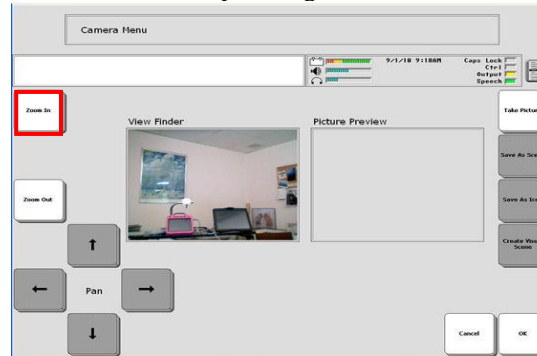
### TAKING A PHOTO USING THE IN-BUILT CAMERA

1. Open the **CAMERA** menu from your Activity Row, select the **ECO TOOLS** key. Then select the **CAMERA** key.

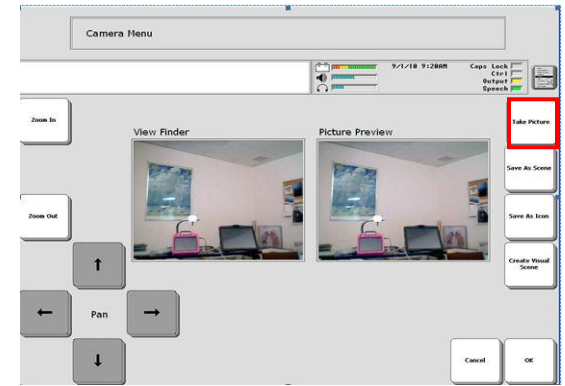


**NOTE:** You can also go to the **Toolbox** and select the **CAMERA MENU**.

This menu may take a few seconds longer to open than other Toolbox menus. You will also see a picture in the View Finder. This will show whatever the camera lens is pointing at.



2. Select the **Zoom-In** key to bring specific objects or areas of the picture into closer focus. (**Note:** As you zoom-in, you will lose resolution. Eventually the picture will become very grainy).
3. Once **Zoom-In** is selected, the **Pan** keys also become available to use. The **Pan** keys allow you to move up, down and sideways in the picture.
4. **Zoom-Out** allows you to return to the original picture.
5. Select the **Take Picture** key once you have the desired image within the View Finder.



6. The **Picture Preview** frame shows you the picture you just took. (Notice that all the option buttons on the right have become active)
7. If you like the picture you can select **Save as Icon**, **Save as Scene**, or **Create Visual Scene**.

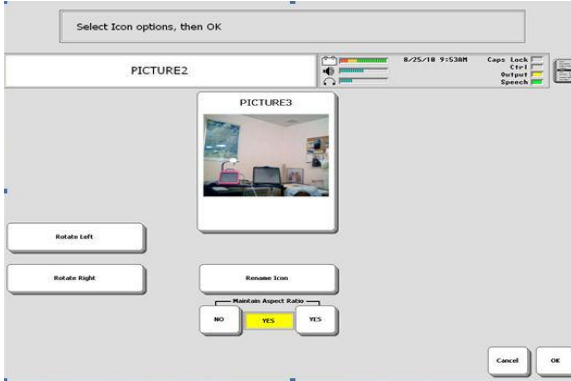
**NOTE:** If you don't like the picture you can take another one. The new picture will replace the old one in **Picture Preview** frame. You can also select **Cancel** or **OK**. Both options will exit the menu without saving any pictures.



**Liberator**  
A Prentke Romich Company  
Communication without limitations

## SAVING YOUR PHOTO AS AN ICON

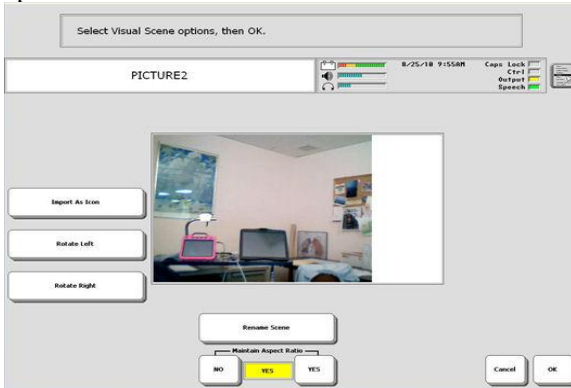
If you select **Save as Icon**, you see the "Icon options" menu.



- You can name your picture
- Rotate your picture left or right.
- We recommend that **Maintain Aspect Ratio** be set to **YES**.
- Select **OK**. When you are satisfied with the picture. The new icon is now included in the **IMPORTS** folder on your Icon Categories pages. You can find it when you select the **Change Icon** option from any storing menu.

## SAVING YOUR PHOTO AS A VISUAL SCENE

If you select **Save as Scene**, you see the "visual scene options" menu.



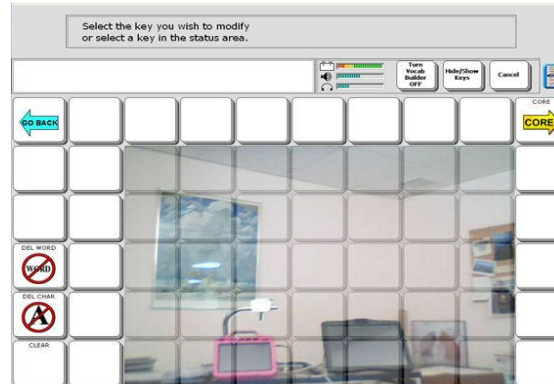
ECO2 version 2.07

- You can name your picture
- Rotate your picture left or right.
- We recommend that **Maintain Aspect Ratio** be set to **YES**.
- Select **OK** When you are satisfied with the picture. The new icon is now included in the **Visual Scene picture** pages. You can find it when you create a Visual Scene.

## CREATING A VISUAL SCENE WITH YOUR PHOTO

If you select **Create Visual Scene**:

1. Your device will automatically insert the scene into the **TEMPLATE PAGE** for your user Area.



2. Select any key on the overlay
3. Select **Rename Page**
4. Press **Clear Display**
5. Spell the name for the new Scene Page and select **OK**.
6. If you wish to change the size of the scene, select **Change Visual Scene** and select **Set Scene Keys**. Select the area you want the picture to cover by selecting a top right corner key and bottom left corner key. Then select **OK**.
7. Select **Choose Next Key to Define**
8. Now you can begin defining keys on your new Scene Page.

**NOTE:** When you select **Create Visual Scene**, your picture is also automatically saved in the **Change Visual Scene** menu pages.

## USEFUL TIP

If you wish to take photos for downloading to your **PC** and printing, you will then need to install other camera software. You must first turn **CAMERA Off** in the **Built-in Devices sub-menu**. You may also need to install a new driver to go with the new camera.

## Liberator contacts

### Regional Consultants

Mark Street: 07747016660

Verity- Jane Hart: 07879818788

Eleri Davies: 07827324286

Jacqui Malthouse: 07825512669

Paul Whitehouse: 07879418897

### Office

Technical Support: 01733 370 470

(Option 2)