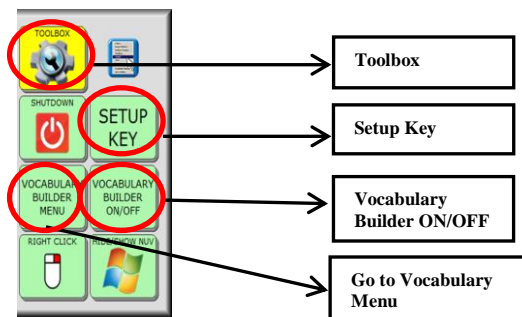


## Vocabulary Builder (VB) - Accent 700, 800, 1000, 1200 & 1400 Quick Reference Guide



**Unity** is a way of arranging language on a Liberator AAC device. Unity is organised to enable typical language development with core vocabulary and to develop motor patterns to promote automaticity.

**Vocabulary Builder (VB)** is designed to teach new vocabulary within Unity Sequenced. The 'masking' of vocabulary allows support staff to teach a small amount of vocabulary on the device while keeping learned motor plans constant.



### Turn Vocabulary Builder ON/OFF

When Vocabulary Builder is ON, a green **VB** appears in the status display.


1. Select the **Setup** key
2. Select **Turn Vocab Builder On/Off**.

\*\*Turn VB off to bring back all vocabulary quickly.


### Method 1: Pre-Made Sets - Unity Sequenced Only

Sets of words have already been created and stored on the Vocabulary Builder page. Examples of pre-made sets including LAMP, starter core sets, and reading sets.

### Preparing for Use

1. To begin, touch the **Pages** button 
2. Select **Setup Key**
3. Select **Hide/Show keys**
4. Select **Vocab Builder** key to unhide
5. Select the text area to exit

### Loading Pre-Made Sets

1. Select touch the **Pages** button 
2. Select Vocab Builder
3. Select **LAMP, Core, Reading, or PPK** sets
4. Select **Load Set**
5. Select one of the sets available.

### Merging Pre-Made Sets

If a set has already been loaded, additional sets may be added. To merge a pre-made set with an existing set:

1. Select **PAGES**
2. Select **VOCAB BUILDER**
3. Select **LAMP, CORE, or READING** or **PPK** sets.
4. Select **MERGE SET**.
5. Select one of the sets available.

### Vocabulary Masking on the Fly (VMOTF)

Vocabulary Masking allows you to quickly make a sequence set for a specific activity. Two easy ways are available to do this: **Sequencing** or **Spelling**.

#### Method 2: Sequencing - Unity Sequenced Only

Allows you to select icon sequences to unmask words.

1. Turn Vocabulary Builder on using the **Setup** key.
2. Select **Vocabulary Masking on the Fly** key.
  - a. If you are **not** currently using VB, select **Mask All**
  - b. If you **are** currently using VB and want to add a few more words, go to step 3
3. Select the sequence(s) needed for the words(s) you wish to unmask. For example:



4. Select the text area to exit.

### Using the Navigate Function

Use the Navigate function to unmask words in activity subcategories (eg foods-fruit) or to make the function on a key active (eg Go back, More)

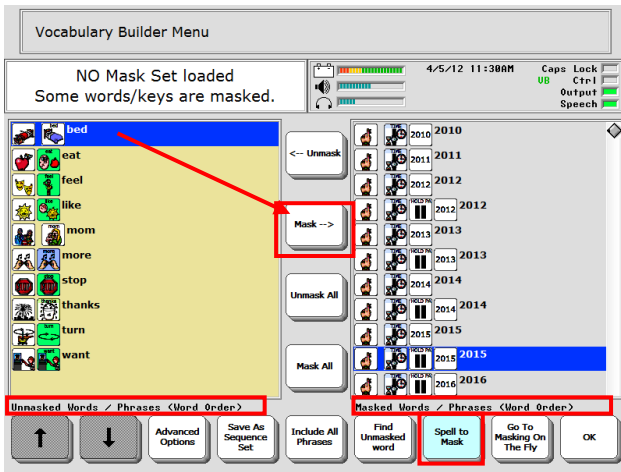
1. Follow the example below to navigate into subcategories to select a word such as 'banana':
  - a. Select the **Vocabulary Masking on the Fly** key.
  - b. Select the apple from the core area, and then select the subcategory **Fruit**.
  - c. Select **Navigate** and touch the Fruit Category again.
  - d. Select **banana**.

2. Select the text area to exit; or to continue masking, touch any blank core button.



### Method 3: Spelling - Unity Sequenced and LAMP Words for Life.

1. Turn Vocabulary Builder **on** using the **Setup** Key
2. Select the **Vocabulary Masking on the Fly** Key
  - a. If you are **Not** currently using VB, select **Mask All**.
  - b. If you **Are** currently using VB and want to add a few more words, go to step 3.
3. Select the **Go to Mask Menu**.
4. Make sure the right-hand side of the screen is tan (pale brown) coloured by tapping it.
5. Select **Spell to Unmask**.
6. Type word(s) to unmask using commas to separate words and /or phrases.
7. Select **OK** when finished
8. Select any icon sequence(s) to remove and select **Mask**. (Note: every icon sequence for each word spelled will be displayed. Remove the sequences you do not wish to teach.)
9. Select **OK**.



### Saving Sequence Sets

If you want to keep Sequence Sets you have built, you need to **SAVE** them

1. Select **Vocabulary Masking on the Fly**.
2. Select **Go To Mask Menu**.
3. Select **Save as Sequence Set**.
4. Type the name for the Sequence Set.
5. Select **OK** twice to exit.

**Note:** You may save as many custom sets as you wish. This is particularly useful if you are using the device with multiple students or if you want to retrieve a set of words quickly.

### Loading Sequence Sets from Toolbox

After creating a Sequence Set, it can be retrieved from the Vocabulary Builder Menu inside the toolbox.

1. Select the **Toolbox** Key
2. Select **Vocabulary Builder Menu**.
3. Select **Advanced Options**.
4. Select **Use Sequence Sets**.
5. Select **Load Sequence Set**.
6. Choose the required set. Select **OK** 3 times.

### Storing a Sequence Set on a Key

An easier way to access saved Sequence Set is to include them on a **Vocabulary Builder** page. Once a Sequence Set is saved, it can be added to the Custom Sets page.

1. With VB turned Off, from the **CORE**, select the **Pages** key to go to the **Vocabulary Builder** page.
2. Select **Custom Sets**.
3. Select the **Load Custom Sets**.

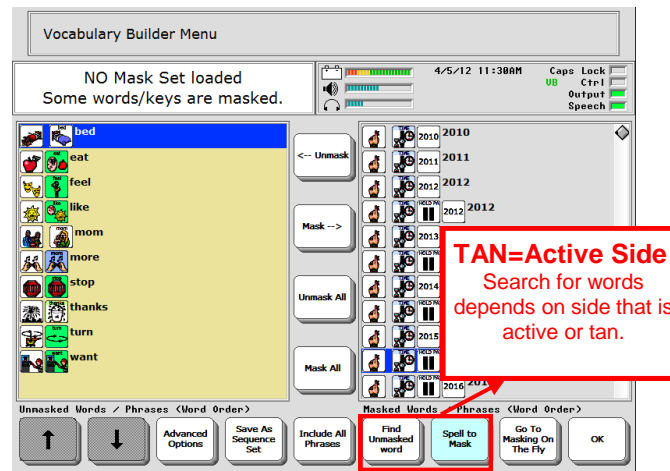
4. Select the **Setup** key.
5. Select a blank key, and choose a blank key
6. Choose **Spell Message or Define Key Function**.
7. Select **Insert Tool**.
8. Select **More Items** until you see **Load Sequence Set**. Choose **Load Sequence Set** (
9. Select the Sequence Set you want to load.
10. Select **Insert Tool**.
11. Select **More Items**, choose **Go To Home**.
12. Select **OK**.
13. Select **Change Label** and type the label.
14. Select **OK** twice to exit.

**Note:** You will also want to store Custom Saved Sequence Sets to the MERGE CUSTOM SETS Page. Use directions above but choose MERGE CUSTOM SETS in steps 3 and 7 and continue.

### Additional TIPS!

#### Active Side When Spelling

When changing between sequencing and spelling methods, or when adding additional words to an existing set, you may notice the tan background changes sides. Be sure the list you are searching always has the **TAN** background. Touch the side to make it active.



#### Sort List By Words, First Icons, or Last Icons

Toggle the key available with the following options:  
**First Options:** Sorts by first icon; helpful for finding all words in particular category (e.g. zoo animals)  
**Last Icons:** Sorts by last icon; helpful for finding multiple adverbs and adjectives.

**Words:** Sorts list by alphabetical order; helpful for finding all the options for that word. When combined with Find Masked Word, words like 'caterpillar' can be found by typing the word 'cat.'



#### Including all Phrases

When the set contains some pronouns and some adverbs: (I, you, want, like), the Include All Phrases button will automatically capture any phrases that can be made from the words selected.

Liberator contacts

**Technical Support:**  
 01733 370470 (Option 2)  
 info@liberator.co.uk

**Address:**  
 Liberator Ltd  
 Whitegates  
 High Street  
 Swinstead  
 NG33 4PA