



PRC ECOpoint™ with  
Essence™ | PRO

## If you are using a PRC ECOpoint™ with Essence™ | PRO

The eye-gaze unit must be configured  
for your eyes.

We **highly recommend** that you ask a  
clinician who is familiar with ECOpoint  
and eye-gaze to help you set up your  
device.

### WHEN YOU NEED MORE INFORMATION

#### Manuals

Essence|PRO *Easy Start* (in the device box)  
Essence|PRO *Operator's Manual* (on the Support CD)

#### Essence Web Site

<http://talknow.prentrom.com>  
(FAQ's, articles, links)

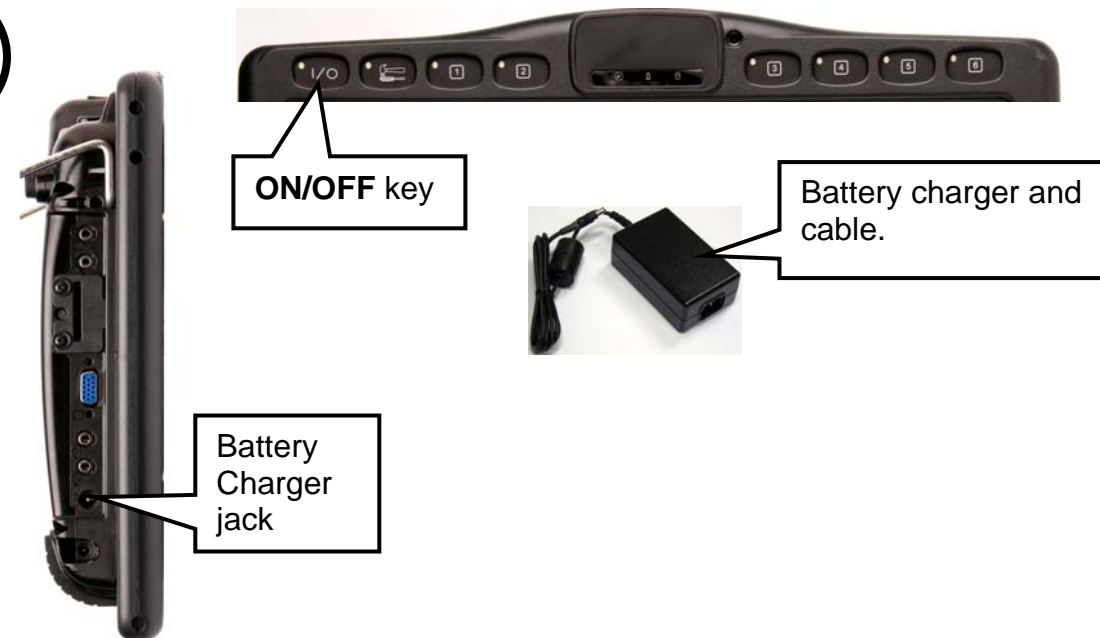
#### Clinician-on-Call

Phone (toll free): 877-872-1428  
Leave your name, number and a short message.  
You will receive a call back within 24 hours.

#### Device Questions

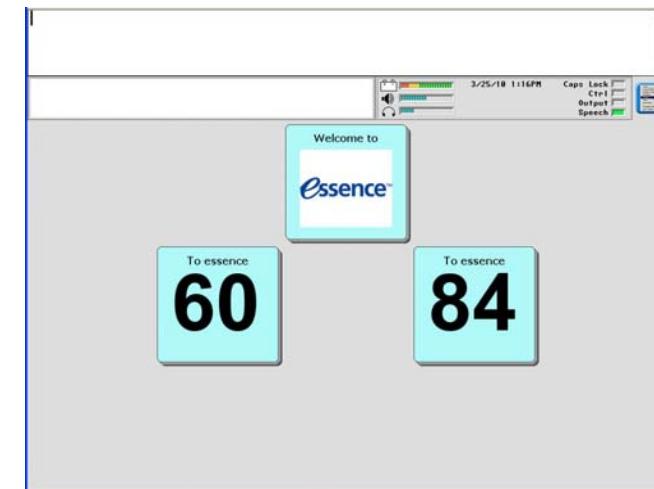
PRC Technical Service Department  
800-262-1990

1

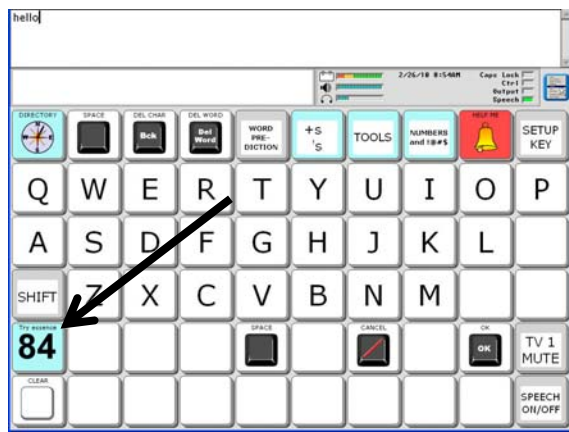


- Plug the small end of the battery charger cable into the battery charger jack on the left side of the case. Plug the other end into a working electrical outlet.

- Press the **ON/OFF** key  on the top front of the case.



- Choose a key size by touching the **60** or **84** key. The 60 key size is a little larger than the 84 key size.



60 Keys

You can try both key sizes by selecting the **Try Essence 84** or **Try Essence 60** key.

You can spell a message on this keyboard.

To hear the message spoken, press or select the Text Display Area where your message appears.

2 Select the **Word Prediction** key in the top row. Start to spell "Let's talk about it."



The words highlighted in yellow predict what you might want to say. If you see what you want, select it. You can select the yellow arrow to see more words.

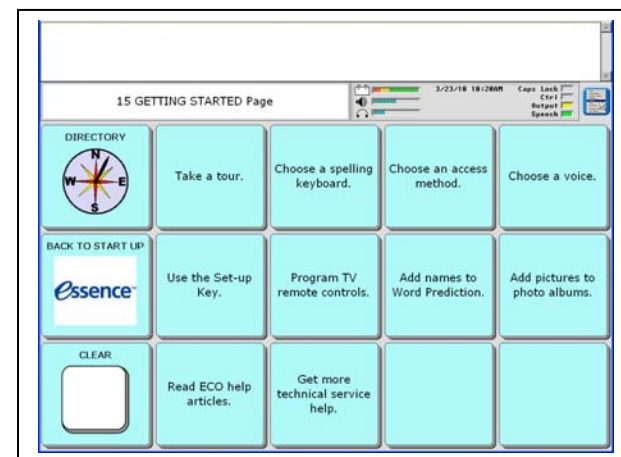
Word Prediction helps you to spell faster. When you are finished, select the **DIRECTORY** key



3 On the **DIRECTORY** page, select the **GETTING STARTED** key

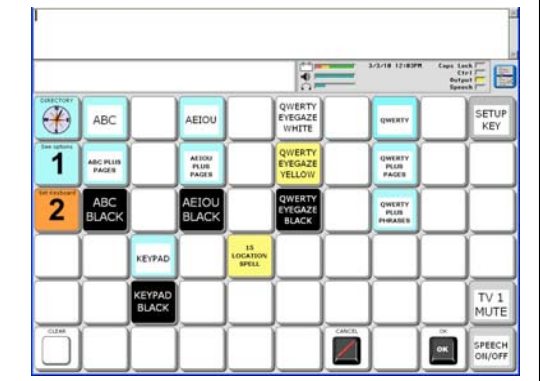


You see the **GETTING STARTED** page.



a

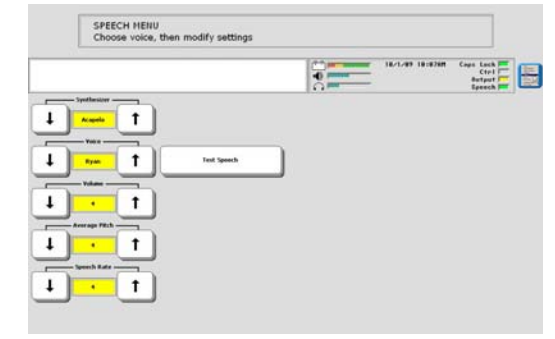
Choose a spelling keyboard.



You will use your keyboard a lot, so try them out first. You want a keyboard that makes it easy for you to spell and has the options on it that you want. Select the **blue key with "1"** on it to hear directions.

b

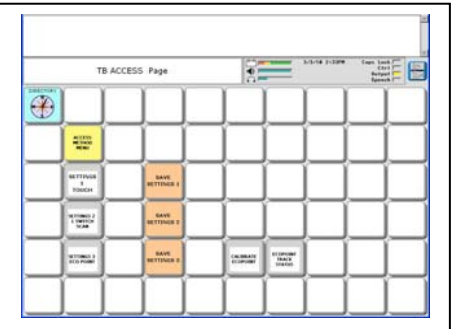
Choose a voice.



Select a speech **Synthesizer**: RealSpeak, Natural Voices, Acapela, DECtalk. Each synthesizer has different voices. Select a **Voice** and press **Test Voice** to listen to it. Select **OK** when you are finished.

c

Choose an access method.



See the **Access Method** pages in the **Easy Start** and **Operator's Manual**. We recommend you ask a clinician to help you set up an Access Method.